

Wiring Instructions

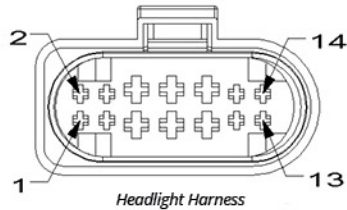
PP0014B

8. First, connect the board to the Switchback driver. Then connect the driver to the pigtail.



9. Finally, tap the pigtail wires to the factory wiring harness. See Wiring Method Diagram below.

The black wire must be grounded before any function will work.



DD WIRE	FUNCTION	PIN	HARNESS LOCATION	DRIVER WIRE	PASSENGER WIRE
RED STANDARD CONFIG.	Parking	PIN 2	Headlight	White/Brown	White/Orange
RED IF DRL IS ENABLED	DRL	PIN 4	Headlight	White/Yellow	White/Dark Blue
WHITE	Low Power, 50% Brightness	PIN 5	Headlight	White/Dark Blue	White/Tan
BLACK	Ground	PIN 6	Headlight	Black	Black
YELLOW	Turn Signal	PIN 12	Headlight	White/Light Green	White/Tan
BLUE	Fault Sense	PIN 14	Headlight	Tan/Brown	Tan/Orange

IMPORTANT: DO NOT plug the LED panel directly into pigtail without the driver. The LEDs must be plugged into driver first to control the power.

10. Mount driver and tuck all wires. **Driver should be mounted outside of headlight for serviceability, in a location away from the engine block to avoid excessive heat buildup.**

11. Test thoroughly, reseal headlight and reinstall onto vehicle.

NEED MORE HELP?

Scan the QR code to link to our installation video online!

We've taken the time to test our products on your vehicle. We can guarantee compatibility and fitment the first time – no guessing game! If you need more help with installation, watch our step-by-step video to walk you through the process.

YouTube



DIODE DYNAMICS

PERFORMANCE LIGHTING TECHNOLOGY

2013-2018 Dodge Ram Switchback LED Board Installation Guide



This installation guide is for the following SKU:

DD2015 Ram 2013 DRL SB LED Boards

DIODE DYNAMICS

2013-2018 Dodge Ram

Switchback LED Board Installation Guide

Thank you for your purchase of this unique product for your Dodge Ram with projector headlamps! With these modules, you will be able to convert your factory amber LEDs inside the headlight into a white running light, along with an amber turn signal feature. They are a direct replacement for the factory LED panels inside the light.



**3 YEAR
WARRANTY**



Please note: Headlights must be opened before proceeding with installation. Professional installation is strongly recommended. Please contact Diode Dynamics if you need assistance locating an installer.

Tools Needed: Torx T10 Screwdriver, Dremel Rotary Tool, Wire Cutter



1. Access the factory LED panels by removing the screws holding the turn signal assembly in place. Remove the chrome reflector unit by depressing the clip on the back of the driver.



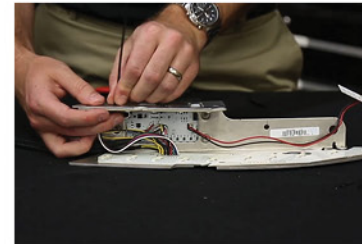
2. Then, remove the torx screws holding the metal bracket to the chrome reflector. Once complete, separate the chrome reflector from the metal bracket. Bring the metal bracket to a clean area away from the chrome reflector.



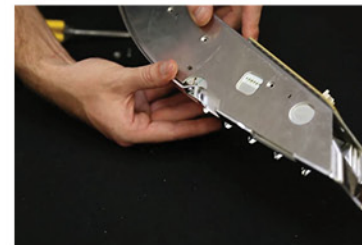
3. Remove the factory LED board from the metal bracket. Remove the metal rivets holding the LED panel to the turn signal housing with a rotary (Dremel) tool. Panels should fall off.



4. Using a wire cutter, cut the wires from factory driver board and remove the panels. If the boards do not easily fall off, make sure to remove any metal burrs that may still be holding them on. You may leave factory driver and sidemarker in place.



5. Place the new Diode Dynamics LED boards into position on the metal bracket. All holes should align perfectly. Adjust if holes do not line up. Use sturdy twist-ties (included) to fasten boards in place, by passing them through the holes where the metal rivets were. We do not recommend adhesives, as they may fail over time.



6. Reinstall chrome reflector to housing. Using the alignment notches, be sure to align properly and push gently back into position. Do not use excessive force. If the reflector is misaligned, there is chance of damaging the LEDs. Once complete, replace the torx screws.



7. Reinstall turn signal housing into main headlamp housing. Run the switchback ribbon cable out of headlamp, along with the 2-wire connector, sealing any holes that you may create. If desired, plug the sidemarker into the factory driver board. Using the alignment pins, set the unit into place. Once complete, replace the torx screws and headlamp lens.

DIODE DYNAMICS

2013-2018 Dodge Ram

Switchback LED Board Installation Guide



[WATCH THE INSTALLATION VIDEO ONLINE!](#)

Scan the QR code on page 3

See back for further instructions.