

Stage Series 2" Pro Yellow Standard LED Pod



FEATURES

STAGE
SERIES



- Modern TIR optics for the highest intensity on the market
- Backlighting in a brilliant amber color
- Durable powdercoated aluminum construction
- Integrated Deutsch-style connector
- Pin-fin heatsink design
- Designed, torture tested and assembled in USA

GENERAL SPECIFICATIONS

Optic	Peak Beam Intensity (Candela)	Illuminance (lux @10m)	Measured Output (Lumens)	Raw Output (Lumens)	Output Color
Driving	46,000 cd	460 lux	1858 lm	2610 lm	Selective Yellow
Flood	650 cd	7 lux	1858 lm	2610 lm	Selective Yellow
Fog	7,500 cd	75 lux	1858 lm	2610 lm	Selective Yellow
Combo	24,000 cd	240 lux	1858 lm	2610 lm	Selective Yellow
Spot	84,000 cd	840 lux	1858 lm	2610 lm	Selective Yellow

Functions: Yellow Output with Amber Backlight

Voltage Range: 9-16V

Current Draw (amps @ 12.8V): 1.81A (output), 55.3mA (backlight)

Wattage: 23.1W (output), 708mW (backlight)

Connector Type: 4 Pin DT Connector

Driver Type: Integrated Driver

LED Type/Count: CREE XPL 4K/2 total, 3014 White/6 total

Compliance Rating: J575 Durability Test, SAE-F J583, SAE-Y J581

Intrusion Rating: IP67 Weatherproof

Operating Temperature: -40°C to 85°C

What's Included:

- One (1) or Two (2) Stage Series 2" LED Pods
- One (1) or Two (2) Deutsch-style wire pigtails
- One (1) or Two (2) Mounting brackets and hardware

Dimensions & Weight:

Length: 12.5" **Width:** 5" **Height:** 3.5"

Weight: 1.1 lbs (single), 1.65 lbs (pair)

SKUs: Append "S" to the end of each SKU for single and "P" for pair

DD6404 Stage Series 2" Pro Yellow Driving Standard ABL
DD6407 Stage Series 2" Pro Yellow Fog Standard ABL

DD6412 Stage Series 2" Pro Yellow Combo Standard ABL
DD6417 Stage Series 2" Pro Yellow Flood Standard ABL

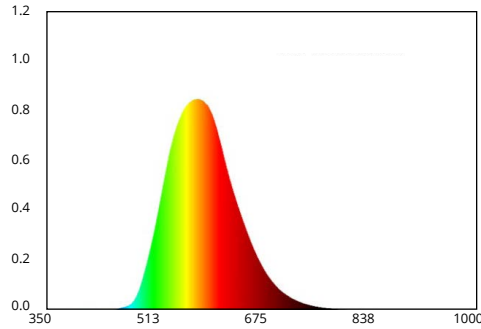
DD6422 Stage Series 2" Pro Yellow Spot Standard ABL

All data and specifications are nominal values and may vary.

PUBLISHED: 1-26-2021

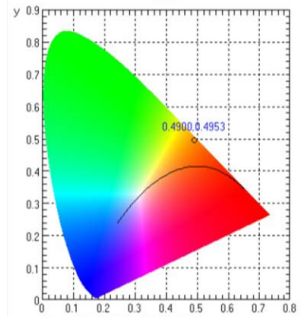
COLORIMETRIC SPECIFICATIONS

YELLOW MAIN BEAM



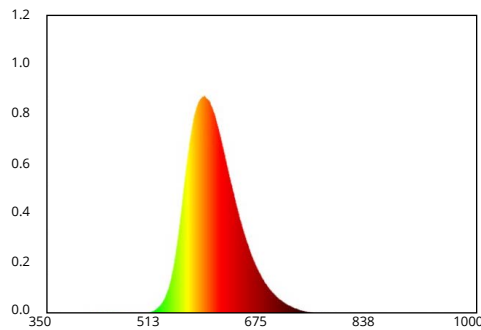
Spectral Distribution

CHROMATICITY



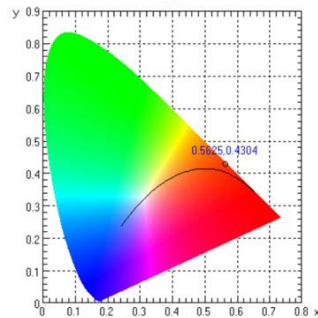
X=0.49, Y=0.4953

AMBER BACKLIGHT



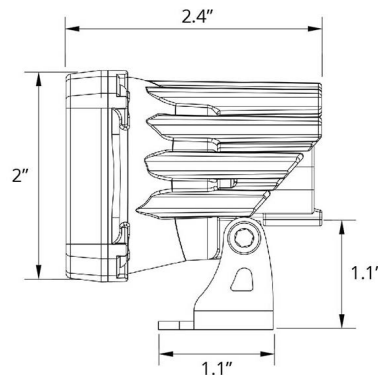
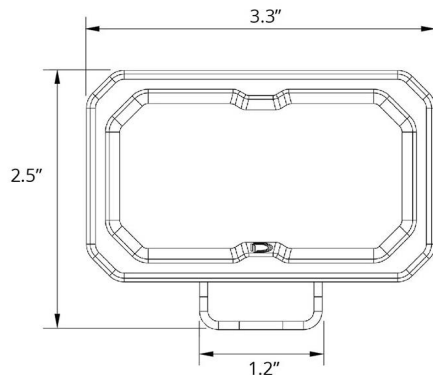
Spectral Distribution

CHROMATICITY



X=0.5625, Y=0.4304

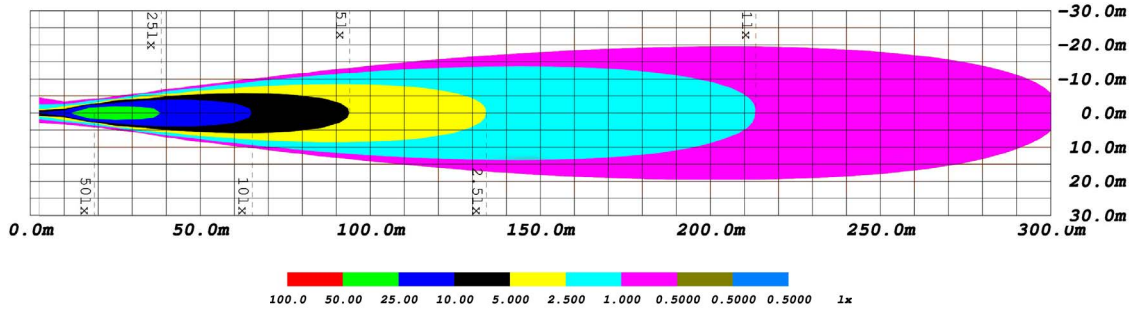
PRODUCT DIMENSIONS



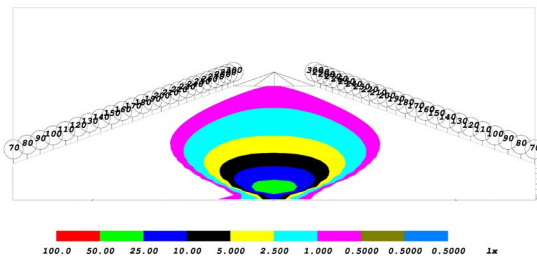
PUBLISHED: 1-26-2021

PHOTOMETRIC SPECIFICATIONS

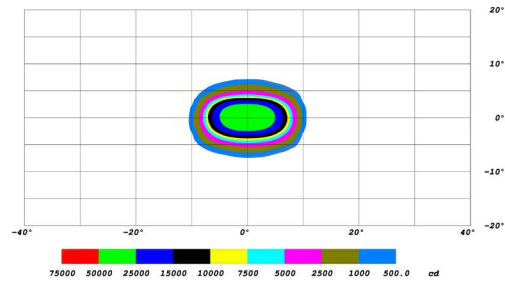
Driving Optic Isolux



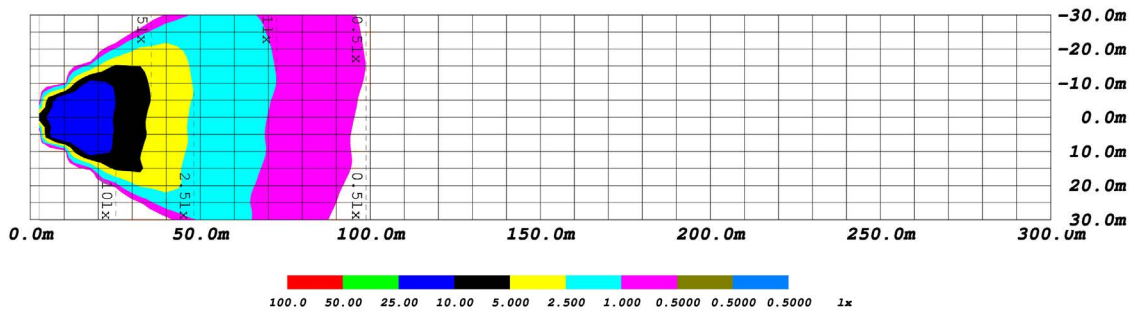
Driving Optic Perspective



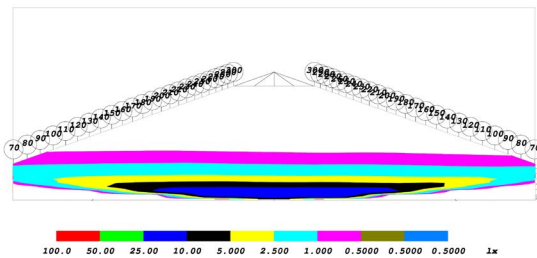
Driving Optic Isocandela



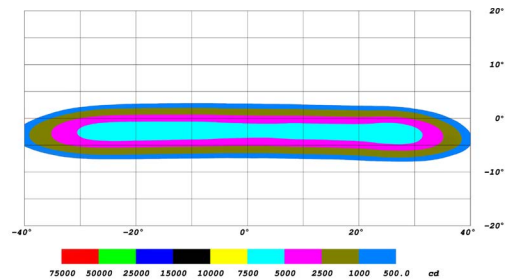
Fog Optic Isolux



Fog Optic Perspective



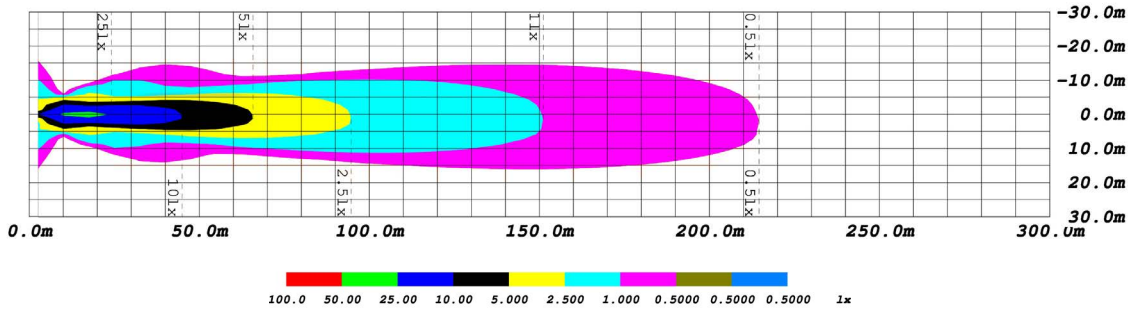
Fog Optic Isocandela



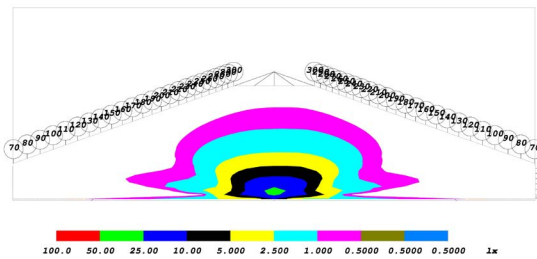
PUBLISHED: 1-26-2021

PHOTOMETRIC SPECIFICATIONS (cont.)

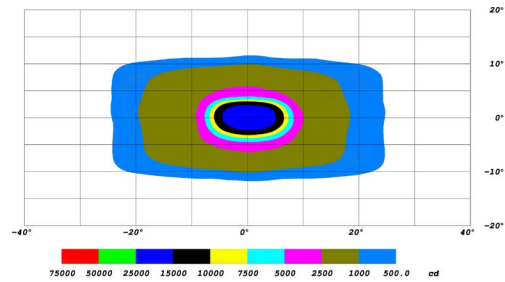
Combo Optic Isolux



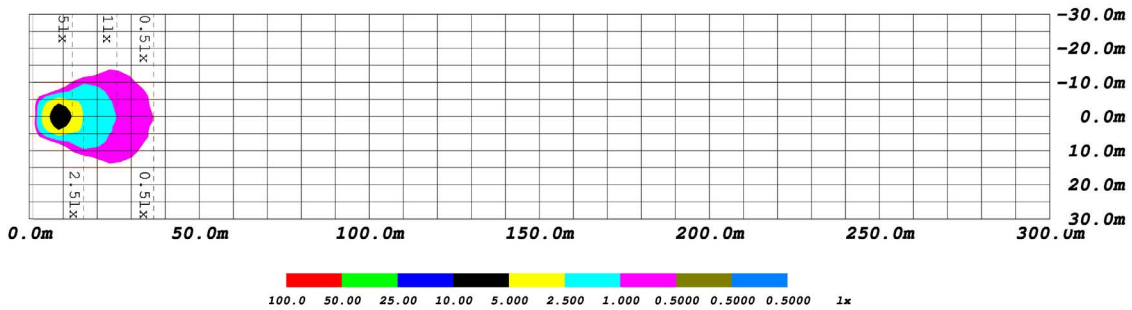
Combo Optic Perspective



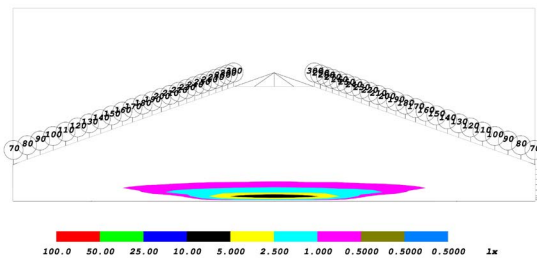
Combo Optic Isocandela



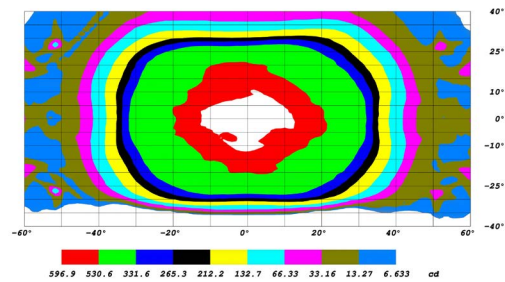
Flood Optic Isolux



Flood Optic Perspective



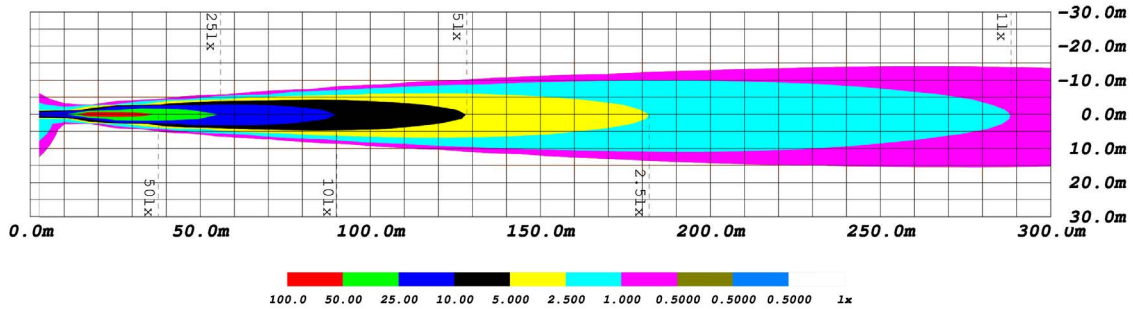
Flood Optic Isocandela



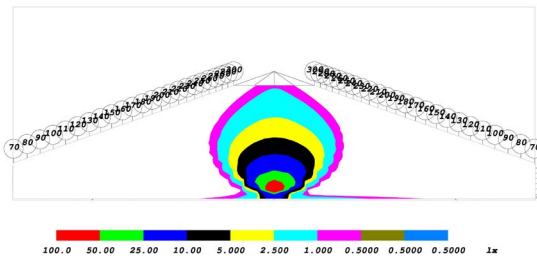
PUBLISHED: 1-26-2021

PHOTOMETRIC SPECIFICATIONS (cont.)

Spot Optic Isolux



Spot Optic Perspective



Spot Optic Isocandela

