



FEATURES

**STAGE
SERIES**



- Modern TIR optics for the highest intensity on the market
- Backlighting available in white, amber, red, and blue
- Durable powdercoated aluminum construction
- Integrated Deutsch-style connector
- Pin-fin heatsink design
- Designed, torture tested and assembled in USA

GENERAL SPECIFICATIONS

Optic	Peak Beam Intensity (Candela)	Illuminance (lux @10m)	Measured Output (Lumens)	Raw Output (Lumens)	Output Color
Driving	59,000 cd	590 lux	1988 lm	2,898 lm	6000K White
Flood	700 cd	7 lux	1988 lm	2,898 lm	6000K White
Fog	8,500 cd	85 lux	1988 lm	2,898 lm	6000K White
Combo	27,000 cd	270 lux	1988 lm	2,898 lm	6000K White
Spot	97,000 cd	970 lux	1988 lm	2,898 lm	6000K White

Functions: White Output with White, Amber, Red, or Blue Backlight

Voltage Range: 9-16V

Current Draw (amps @ 12.8V): 1.92A (output), 55.3mA (backlight)

Wattage: 24.57W (output), 708mW (backlight)

Connector Type: 4 Pin DT Connector

Driver Type: Integrated Driver

LED Type/Count: Cree XPL 6K/2 total, 3014/6 total

Compliance Rating: J575 Durability Test, SAE-F J583, SAE-Y J581

Intrusion Rating: IP67 Weatherproof

Operating Temperature: -40°C to 85°C

What's Included:

- One (1) or Two (2) Stage Series 2" LED Pods
- One (1) or Two (2) Deutsch-style wire pigtails
- One (1) or Two (2) Mounting brackets and hardware

Dimensions & Weight:

Length: 12.5" **Width:** 5" **Height:** 3.5"

Weight: 1.1 lbs (single), 1.65 lbs (pair)

SKUs: Append "S" to the end of each SKU for single and "P" for pair

DD6402 Stage Series 2" Pro White Driving Standard WBL
DD6403 Stage Series 2" Pro White Driving Standard ABL
DD6405 Stage Series 2" Pro White Fog Standard WBL
DD6406 Stage Series 2" Pro White Fog Standard ABL
DD6408 Stage Series 2" Pro White Combo Standard WBL
DD6409 Stage Series 2" Pro White Combo Standard ABL

DD6410 Stage Series 2" Pro White Combo Standard RBL
DD6411 Stage Series 2" Pro White Combo Standard BBL
DD6413 Stage Series 2" Pro White Flood Standard WBL
DD6414 Stage Series 2" Pro White Flood Standard ABL
DD6415 Stage Series 2" Pro White Flood Standard RBL
DD6416 Stage Series 2" Pro White Flood Standard BBL

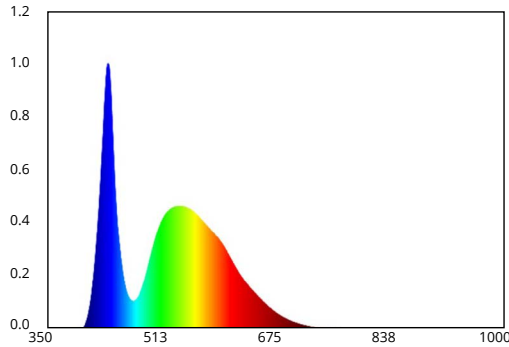
DD6418 Stage Series 2" Pro White Spot Standard WBL
DD6419 Stage Series 2" Pro White Spot Standard ABL
DD6420 Stage Series 2" Pro White Spot Standard RBL
DD6421 Stage Series 2" Pro White Spot Standard BBL

All data and specifications are nominal values and may vary.

PUBLISHED: 1-26-2021

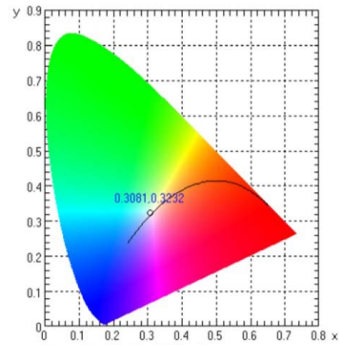
COLORIMETRIC SPECIFICATIONS

WHITE MAIN BEAM



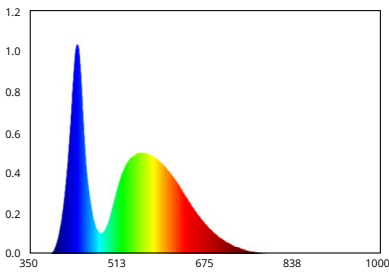
Spectral Distribution

CHROMATICITY



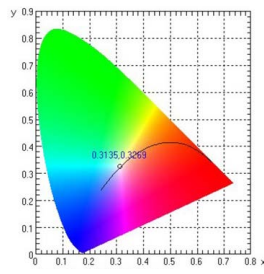
X=0.3081, Y=0.3232

WHITE BACKLIGHT



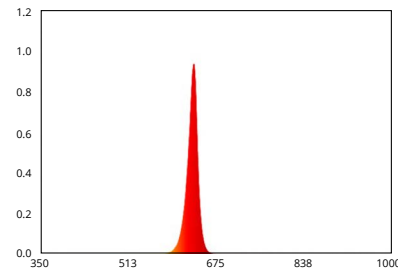
Spectral Distribution

CHROMATICITY



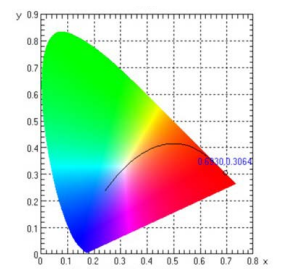
X=0.3135, Y=0.3269

RED BACKLIGHT



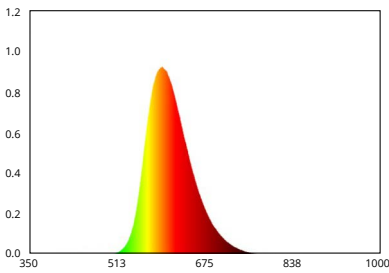
Spectral Distribution

CHROMATICITY



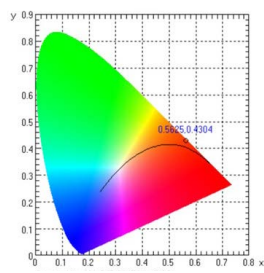
X=0.6930, Y=0.3064

AMBER BACKLIGHT



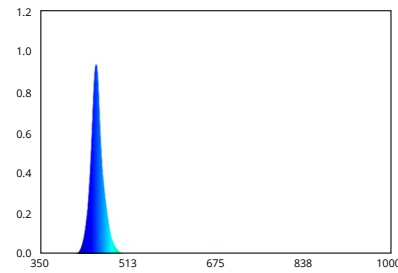
Spectral Distribution

CHROMATICITY



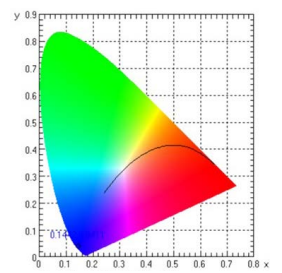
X=0.5625, Y=0.4304

BLUE BACKLIGHT



Spectral Distribution

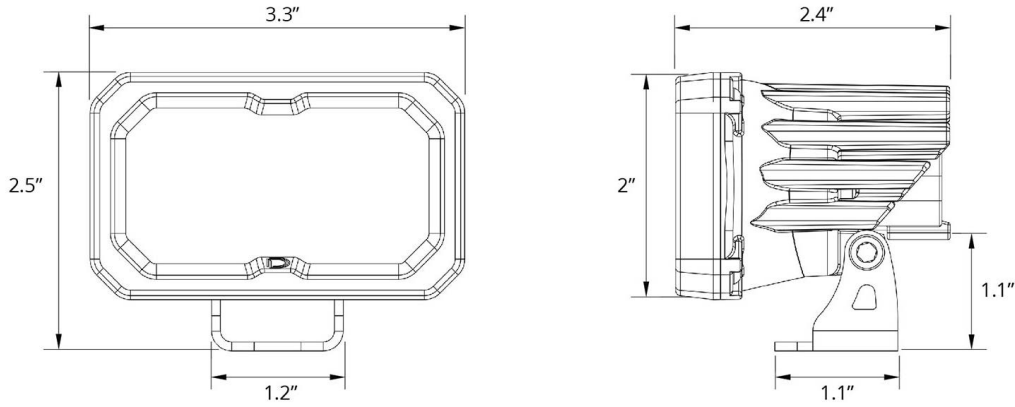
CHROMATICITY



X=0.1442, Y=0.0411

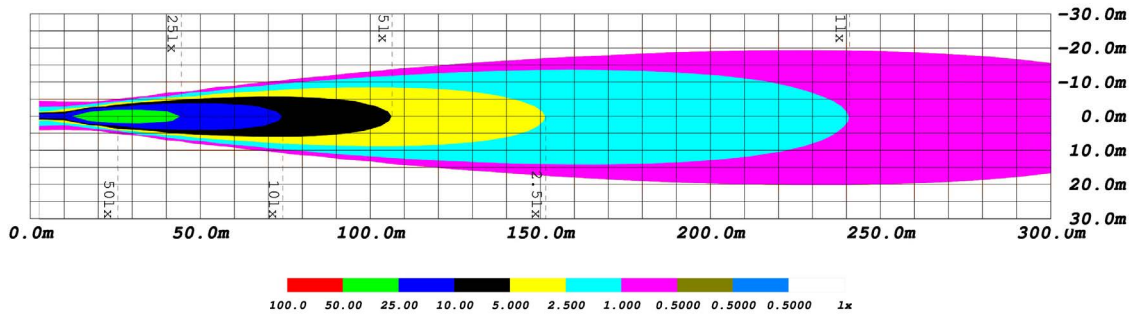
PUBLISHED: 1-26-2021

PRODUCT DIMENSIONS

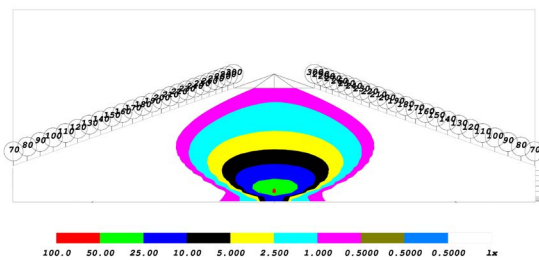


PHOTOMETRIC SPECIFICATIONS

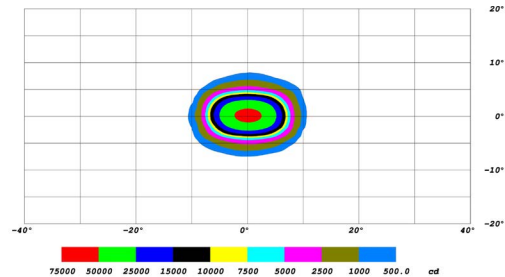
Driving Optic Isolux



Driving Optic Perspective



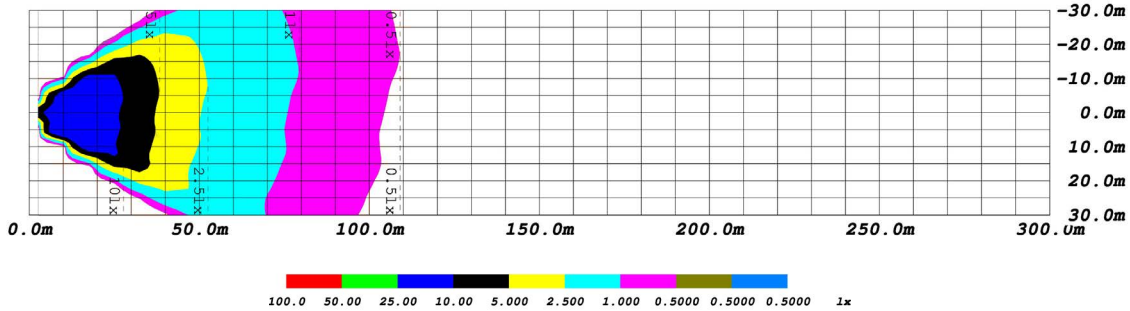
Driving Optic Isocandela



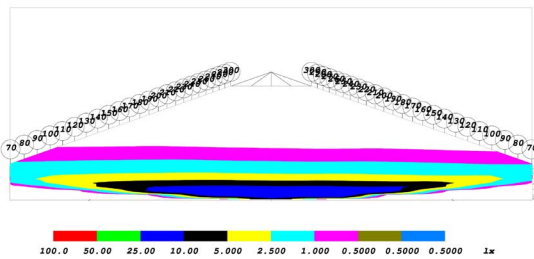
PUBLISHED: 1-26-2021

PHOTOMETRIC SPECIFICATIONS (cont.)

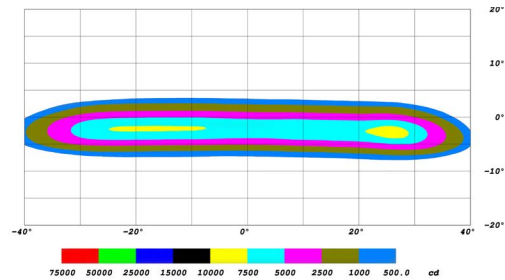
Fog Optic Isolux



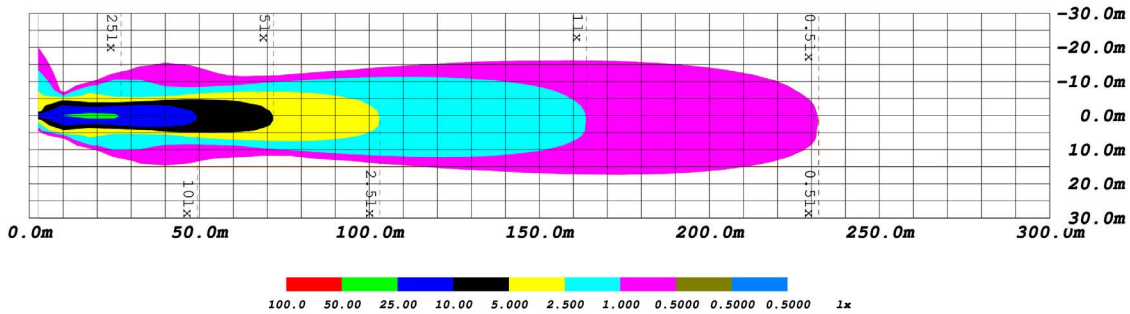
Fog Optic Perspective



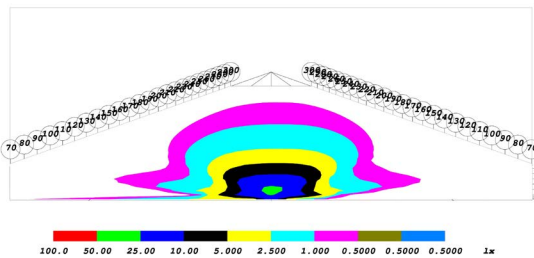
Fog Optic Isocandela



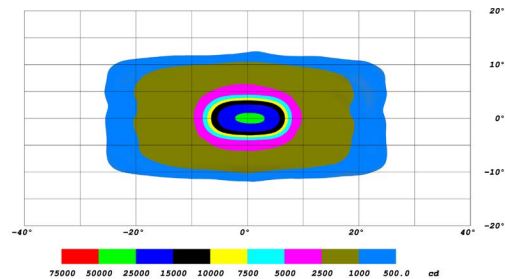
Combo Optic Isolux



Combo Optic Perspective



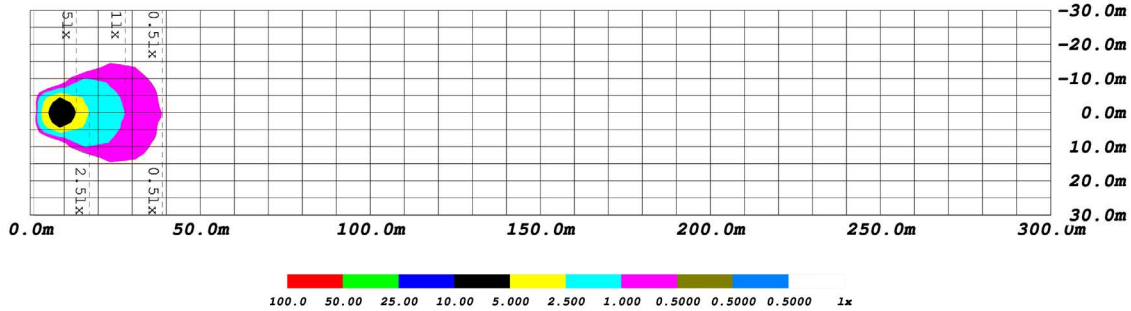
Combo Optic Isocandela



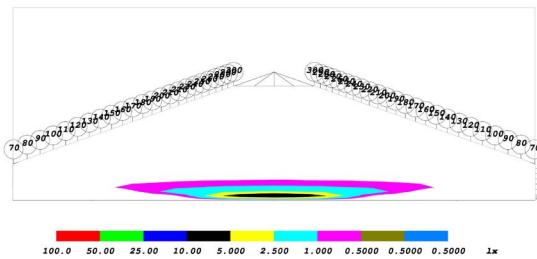
PUBLISHED: 1-26-2021

PHOTOMETRIC SPECIFICATIONS (cont.)

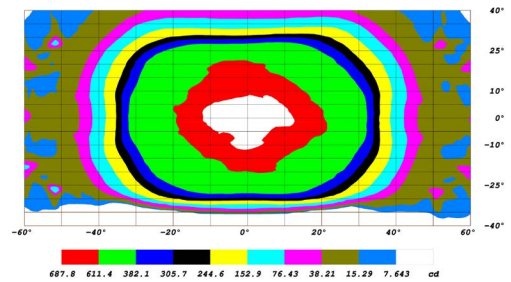
Flood Optic Isolux



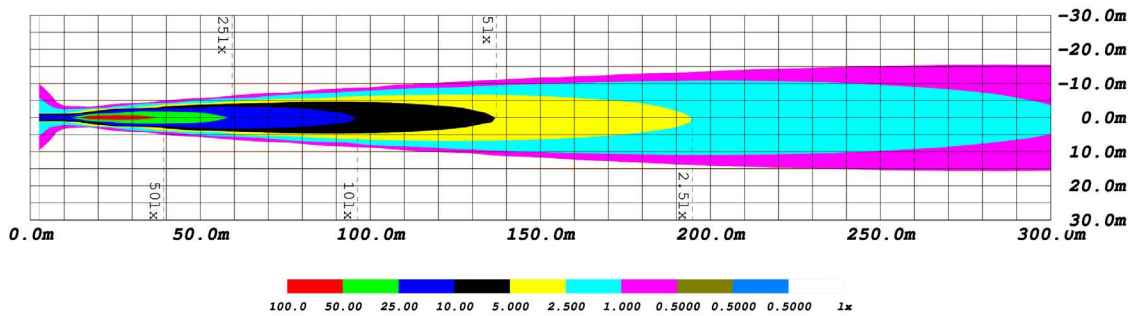
Flood Optic Perspective



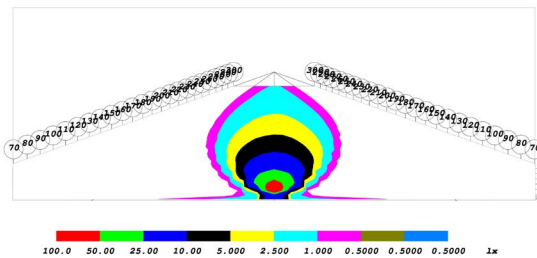
Flood Optic Isocandela



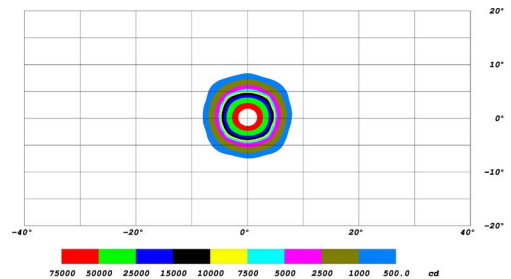
Spot Optic Isolux



Spot Optic Perspective



Spot Optic Isocandela



PUBLISHED: 1-26-2021