



FEATURES

**STAGE
SERIES**



- Compact single-LED form factor
- High intensity LED chip
- Backlighting available in white, amber, red, and blue
- Durable powdercoated aluminum construction
- Integrated Deutsch-style connector
- Designed, torture tested and assembled in USA

GENERAL SPECIFICATIONS

Optic	Peak Beam Intensity (Candela)	Illuminance (lux @10m)	Measured Output (Lumens)	Raw Output (Lumens)	Output Color
Wide	2,500 cd	25 lux	1,030 lm	1,449 lm	6000K White
Flood	400 cd	4 lux	1,030 lm	1,449 lm	6000K White
Spot	50,000 cd	500 lux	1,030 lm	1,449 lm	6000K White

Functions: White Output with White, Amber, Red, or Blue Backlight

Voltage Range: 9-16V

Current Draw (amps @ 12.8V): 1.1A (output), 24mA (backlight)

Wattage: 13.6W (output), 0.3W (backlight)

Connector Type: 4 Pin DT Connector

Driver Type: Integrated Driver

LED Type/Count: Cree XPL 6000K/1 total, 3014/3 total

Compliance Rating: J575 Durability Test

Intrusion Rating: IP67 Weatherproof

Operating Temperature: -40°C to 85°C

What's Included:

- One (1) or Two (2) SSC1 Standard LED Pods
- One (1) or Two (2) Deutsch-style wire pigtails
- One (1) or Two (2) Mounting brackets and hardware

Dimensions & Weight:

Length: 7.5" **Width:** 4.5" **Height:** 3"

Weight: 0.7 lbs (single), 1.2 lbs (pair)

SKUs: Append "S" to the end of each SKU for single and "P" for pair

DD6439 SSC1 Sport White Wide Standard WBL
DD6440 SSC1 Sport White Wide Standard ABL
DD6441 SSC1 Sport White Wide Standard RBL
DD6442 SSC1 Sport White Wide Standard BBL

DD6444 SSC1 Sport White Flood Standard WBL
DD6445 SSC1 Sport White Flood Standard ABL
DD6446 SSC1 Sport White Flood Standard RBL
DD6447 SSC1 Sport White Flood Standard BBL

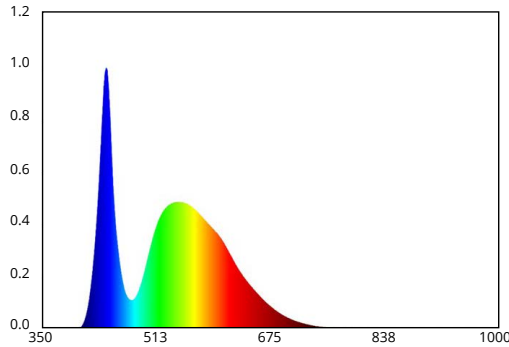
DD6449 SSC1 Sport White Spot Standard WBL
DD6450 SSC1 Sport White Spot Standard ABL
DD6451 SSC1 Sport White Spot Standard RBL
DD6452 SSC1 Sport White Spot Standard BBL

All data and specifications are nominal values and may vary.

PUBLISHED: 1-10-2022

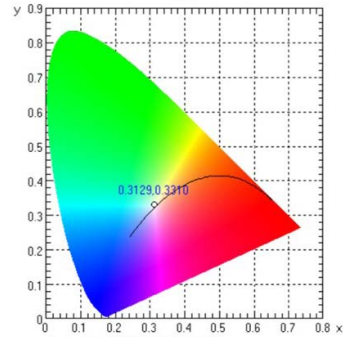
COLORIMETRIC SPECIFICATIONS

WHITE MAIN BEAM



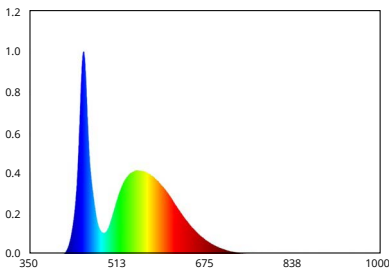
Spectral Distribution

CHROMATICITY



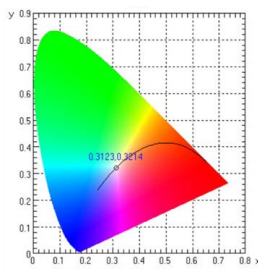
X=0.3129, Y=0.3310

WHITE BACKLIGHT



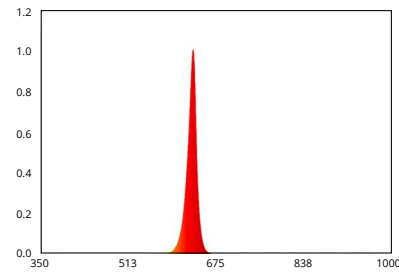
Spectral Distribution

CHROMATICITY



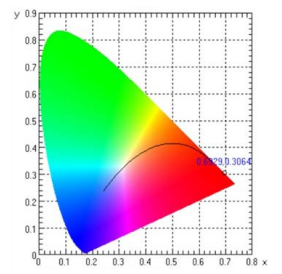
X=0.3123, Y=0.3214

RED BACKLIGHT



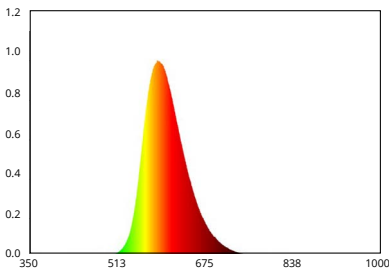
Spectral Distribution

CHROMATICITY



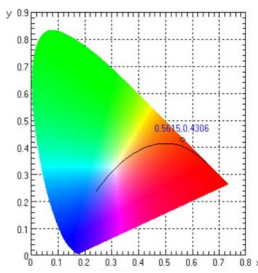
X=0.6929, Y=0.3064

AMBER BACKLIGHT



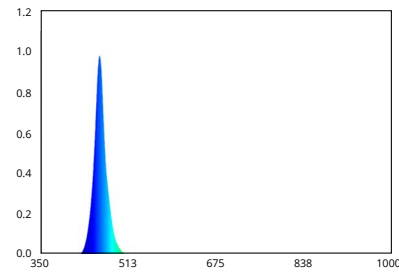
Spectral Distribution

CHROMATICITY



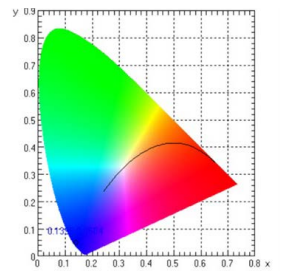
X=0.5615, Y=0.4306

BLUE BACKLIGHT



Spectral Distribution

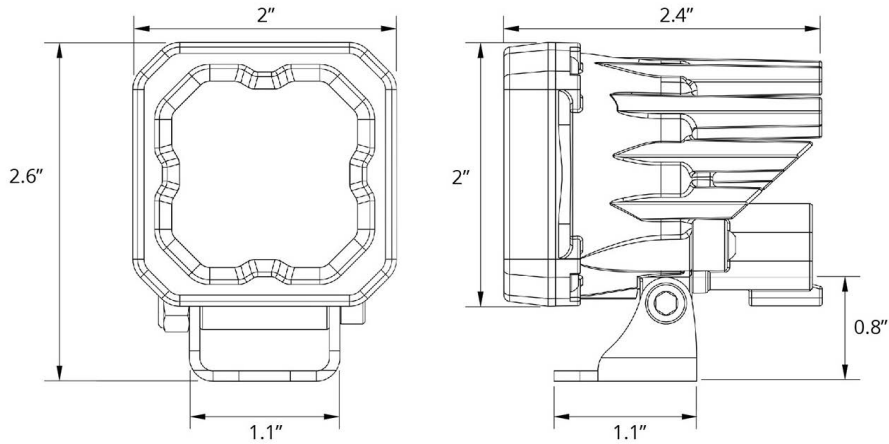
CHROMATICITY



X=0.1395, Y=0.0504

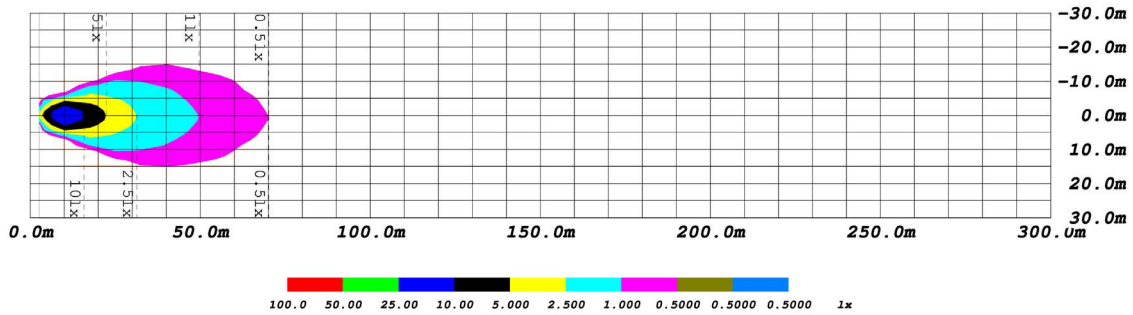
PUBLISHED: 1-10-2022

PRODUCT DIMENSIONS

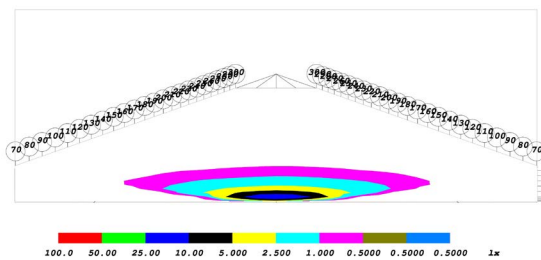


PHOTOMETRIC SPECIFICATIONS

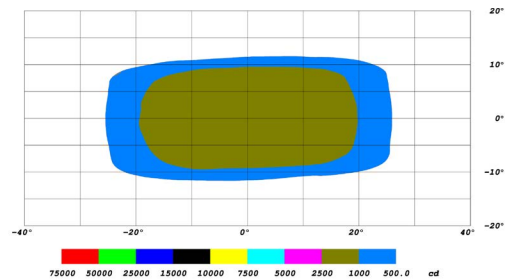
Wide Optic Isolux



Wide Optic Perspective



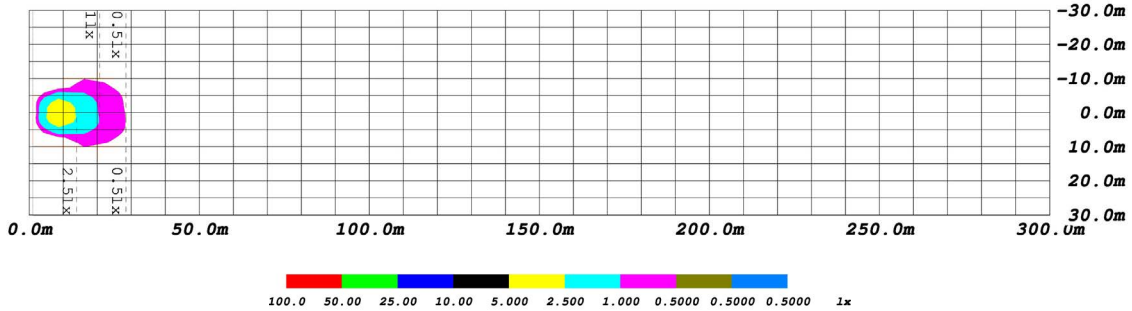
Wide Optic Isocandela



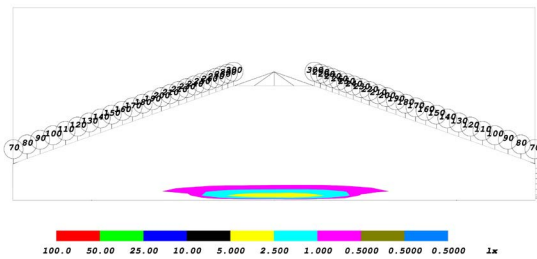
PUBLISHED: 1-10-2022

PHOTOMETRIC SPECIFICATIONS (cont.)

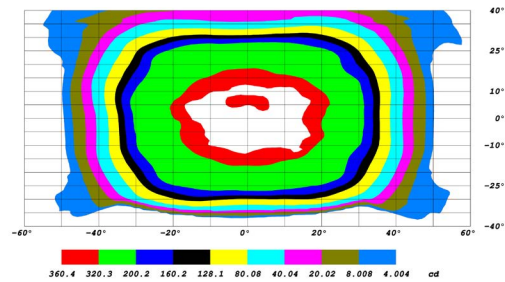
Flood Optic Isolux



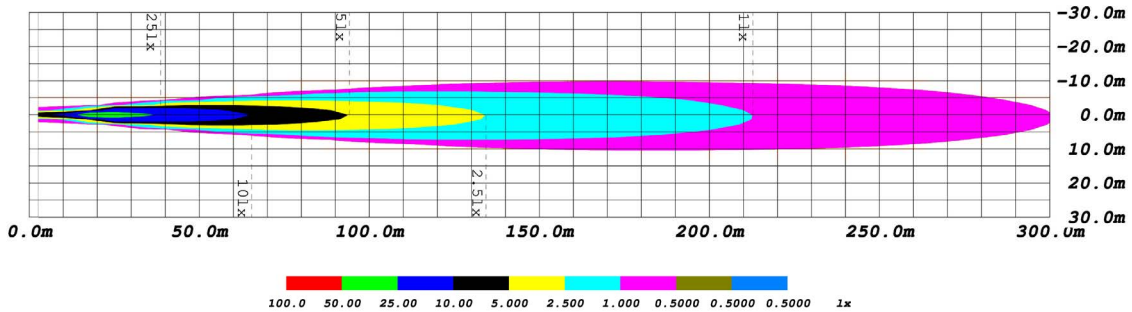
Flood Optic Perspective



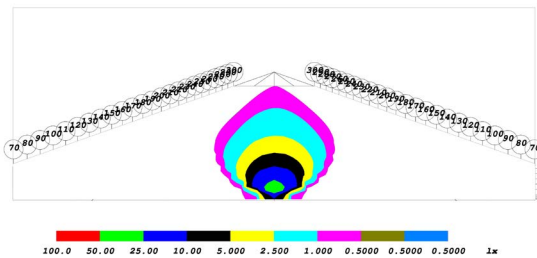
Flood Optic Isocandela



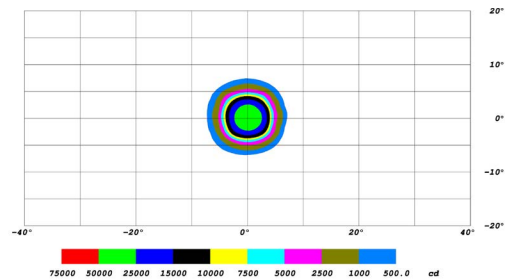
Spot Optic Isolux



Spot Optic Perspective



Spot Optic Isocandela



PUBLISHED: 1-10-2022