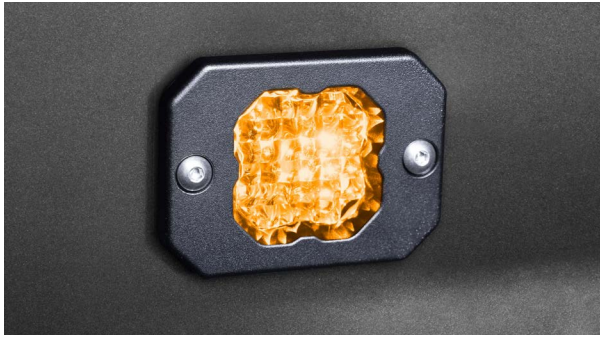


# SSC1 Sport White Flush LED Pod



## FEATURES

STAGE  
SERIES



- Allows for flush installation with truck bumpers, truck beds, and anywhere else you can think of
- High intensity LED chip
- Backlighting available in white, amber, red, and blue
- Durable powdercoated aluminum construction
- Integrated Deutsch-style connector

## GENERAL SPECIFICATIONS

Optic	Peak Beam Intensity (Candela)	Illuminance (lux @10m)	Measured Output (Lumens)	Raw Output (Lumens)	Output Color
Flood	400 cd	4 lux	1,030 lm	1,449 lm	6000K White

**Functions:** White Output with White, Amber, Red, or Blue Backlight

**Voltage Range:** 9-16V

**Current Draw (amps @ 12.8V):** 1.1A (output), 24mA (backlight)

**Wattage:** 13.6W (output), 0.3W (backlight)

**Connector Type:** 4 Pin DT Connector

**Driver Type:** Integrated Driver

**LED Type/Count:** Cree XPL 6000K/1 total, 3014/3 total

**Compliance Rating:** J575 Durability Test

**Intrusion Rating:** IP67 Weatherproof

**Operating Temperature:** -40°C to 85°C

### What's Included:

- One (1) or Two (2) SSC1 Flush LED Pods
- One (1) or Two (2) Deutsch-style wire pigtails
- One (1) or Two (2) Flush Frame gaskets
- Mounting hardware and drilling template

### Dimensions & Weight:

**Length:** 7.5" **Width:** 4.5" **Height:** 3"

**Weight:** 0.7 lbs (single), 1.2 lbs (pair)

SKUs: Append "S" to the end of each SKU for single and "P" for pair

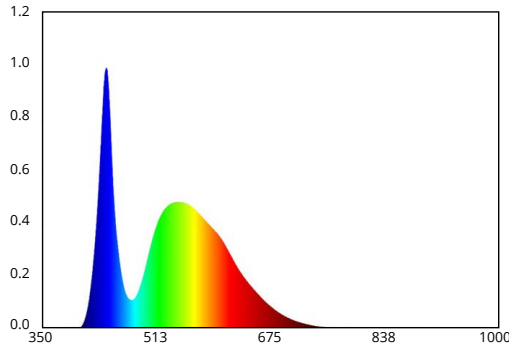
DD6469 SSC1 Sport White Flood Flush WBL  
DD6470 SSC1 Sport White Flood Flush ABL  
DD6471 SSC1 Sport White Flood Flush RBL  
DD6472 SSC1 Sport White Flood Flush BBL

All data and specifications are nominal values and may vary.

PUBLISHED: 1-10-2022

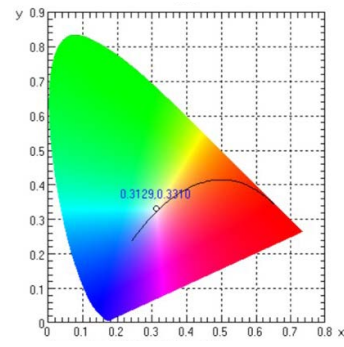
**COLORIMETRIC SPECIFICATIONS**

**WHITE MAIN BEAM**



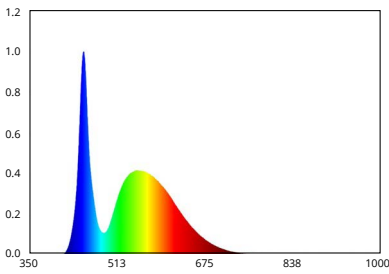
Spectral Distribution

**CHROMATICITY**



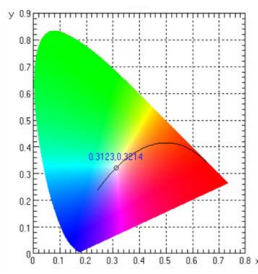
X=0.3129, Y=0.3310

**WHITE BACKLIGHT**



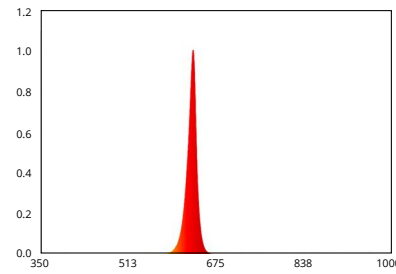
Spectral Distribution

**CHROMATICITY**



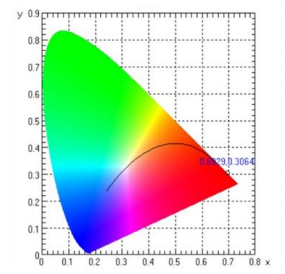
X=0.3123, Y=0.3214

**RED BACKLIGHT**



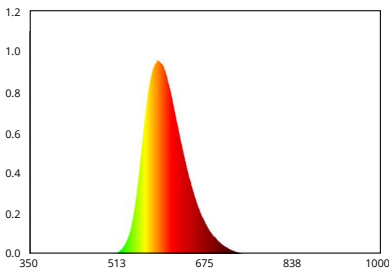
Spectral Distribution

**CHROMATICITY**



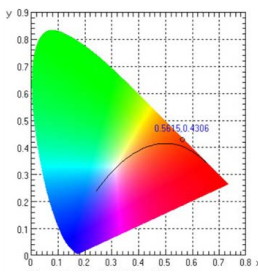
X=0.6929, Y=0.3064

**AMBER BACKLIGHT**



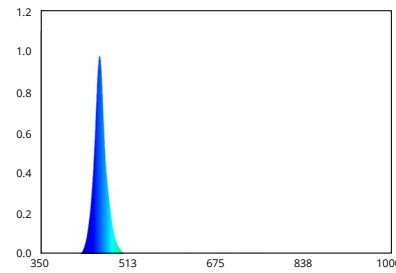
Spectral Distribution

**CHROMATICITY**



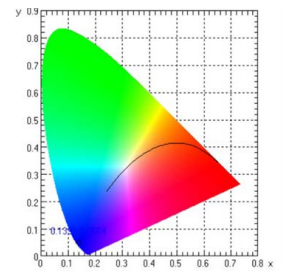
X=0.5615, Y=0.4306

**BLUE BACKLIGHT**



Spectral Distribution

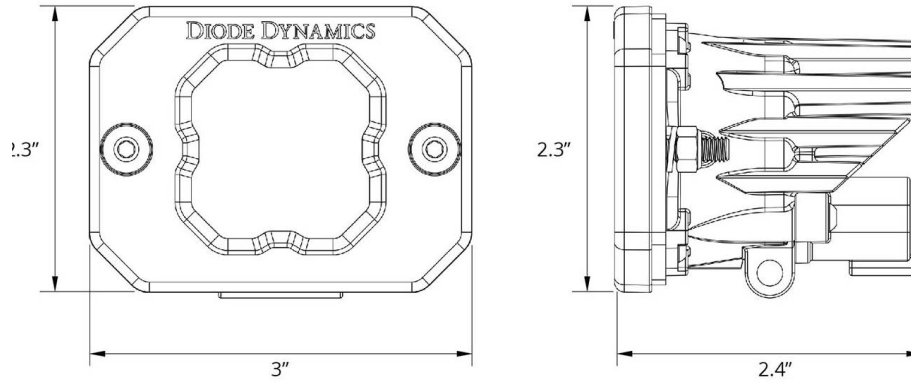
**CHROMATICITY**



X=0.1395, Y=0.0504

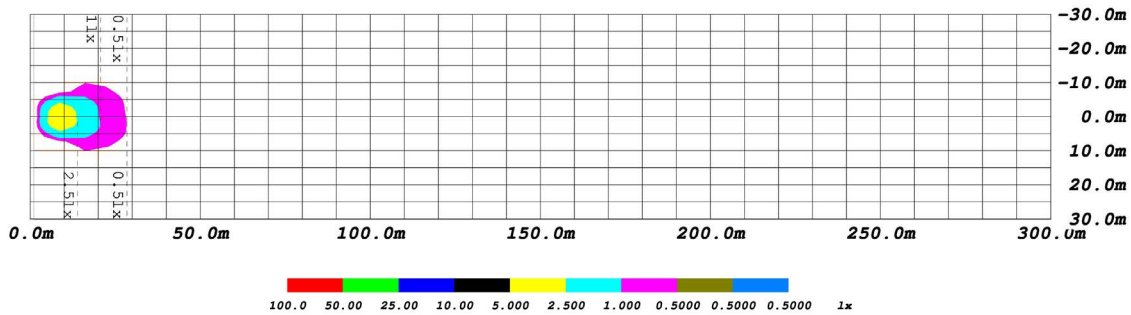
**PUBLISHED: 1-10-2022**

## PRODUCT DIMENSIONS

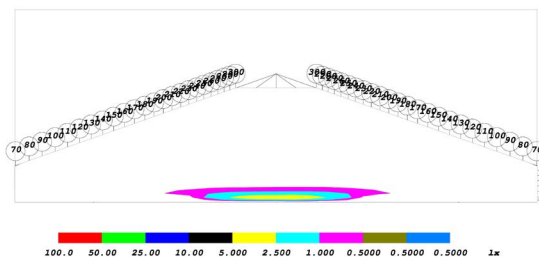


## PHOTOMETRIC SPECIFICATIONS

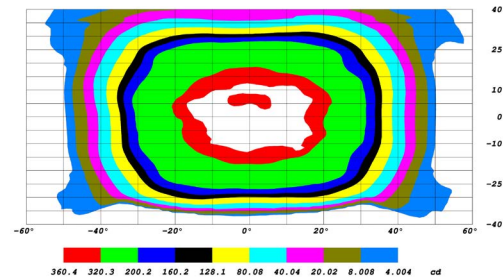
Flood Optic Isolux



Flood Optic Perspective



Flood Optic Isocandela



PUBLISHED: 1-10-2022