



FEATURES

STAGE
SERIES



- Compact single-LED form factor
- High intensity LED chip
- Backlighting available amber
- Durable powdercoated aluminum construction
- Integrated Deutsch-style connector
- Designed, torture tested and assembled in USA

GENERAL SPECIFICATIONS

Optic	Peak Beam Intensity (Candela)	Illuminance (lux @10m)	Measured Output (Lumens)	Raw Output (Lumens)	Output Color
Wide	4,600 cd	46 lux	2,200 lm	2,375 lm	Selective Yellow
Flood	780 cd	8 lux	2,200 lm	2,375 lm	Selective Yellow
Spot	18,000 cd	180 lux	2,200 lm	2,375 lm	Selective Yellow

Functions: Yellow Output with Amber Backlight

Voltage Range: 9-16V

Current Draw (amps @ 12.8V): 1.7A (output), 25mA (backlight)

Wattage: 21.5W (output), 0.3W (backlight)

Connector Type: 4 Pin DT Connector

Driver Type: Integrated Driver

LED Type/Count: Cree XHP50 4000K/1 total, 3014/3 total

Compliance Rating: J575 Durability Test

Intrusion Rating: IP67 Weatherproof

Operating Temperature: -40°C to 85°C

What's Included:

- One (1) or Two (2) SSC1 Standard LED Pods
- One (1) or Two (2) Deutsch-style wire pigtails
- One (1) or Two (2) Mounting brackets and hardware

Dimensions & Weight:

Length: 7.5" **Width:** 4.5" **Height:** 3"

Weight: 0.7 lbs (single), 1.2 lbs (pair)

SKUs: Append "S" to the end of each SKU for single and "P" for pair

DD6458 SSC1 Pro Yellow Wide Standard ABL

DD6463 SSC1 Pro Yellow Flood Standard ABL

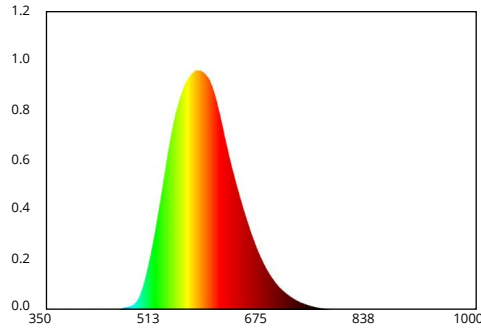
DD6468 SSC1 Pro Yellow Spot Standard ABL

All data and specifications are nominal values and may vary.

PUBLISHED: 1-10-2022

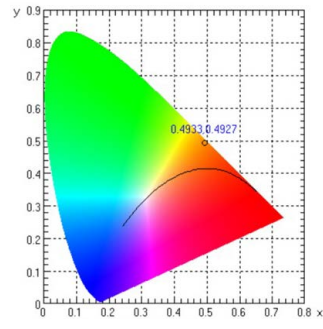
COLORIMETRIC SPECIFICATIONS

YELLOW MAIN BEAM



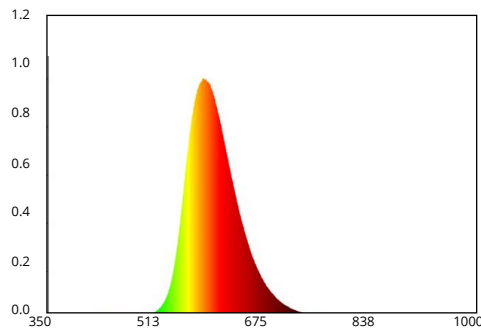
Spectral Distribution

CHROMATICITY



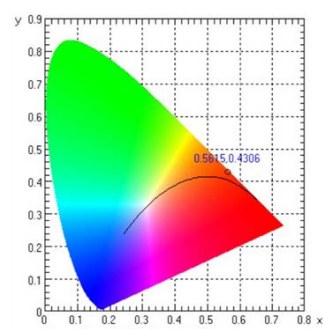
X=0.4933, Y=0.4927

AMBER BACKLIGHT



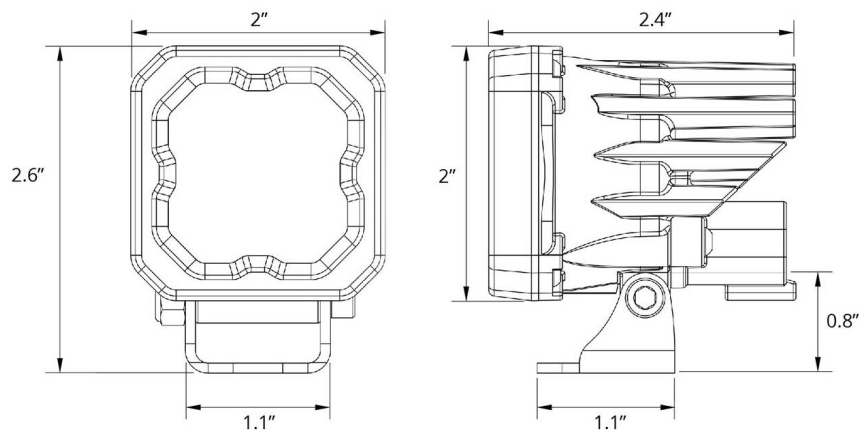
Spectral Distribution

CHROMATICITY



X=0.5615, Y=0.4306

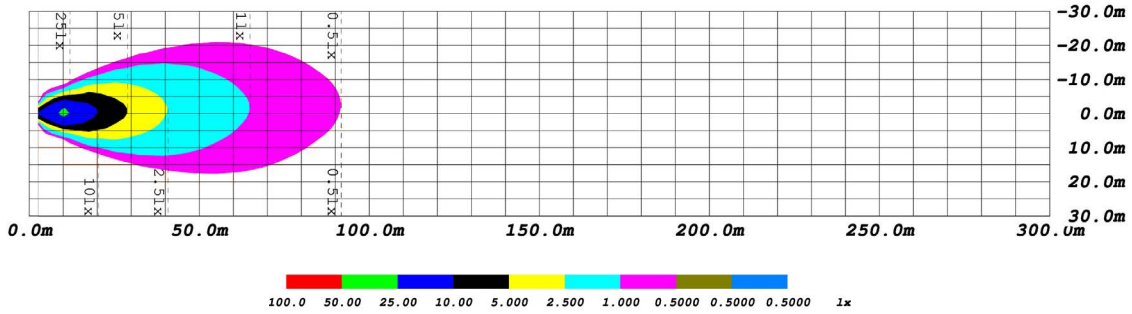
PRODUCT DIMENSIONS



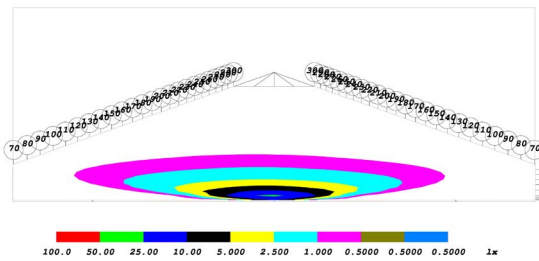
PUBLISHED: 1-10-2022

PHOTOMETRIC SPECIFICATIONS

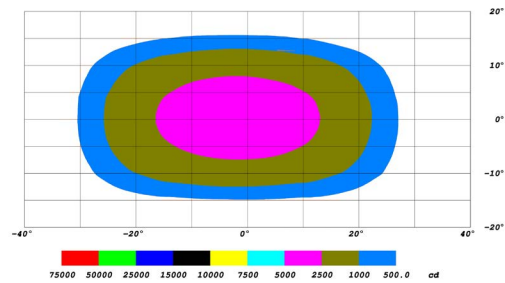
Wide Optic Isolux



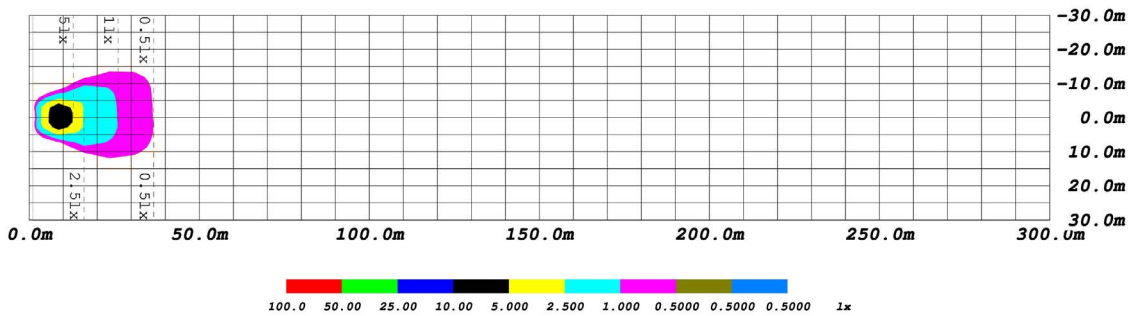
Wide Optic Perspective



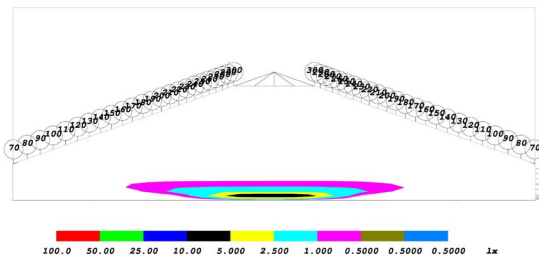
Wide Optic Isocandela



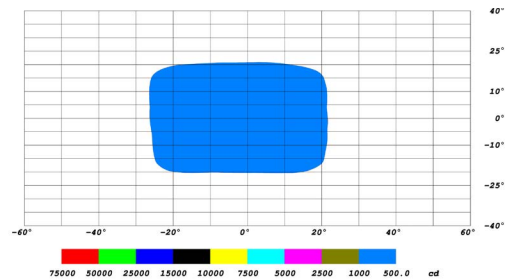
Flood Optic Isolux



Flood Optic Perspective



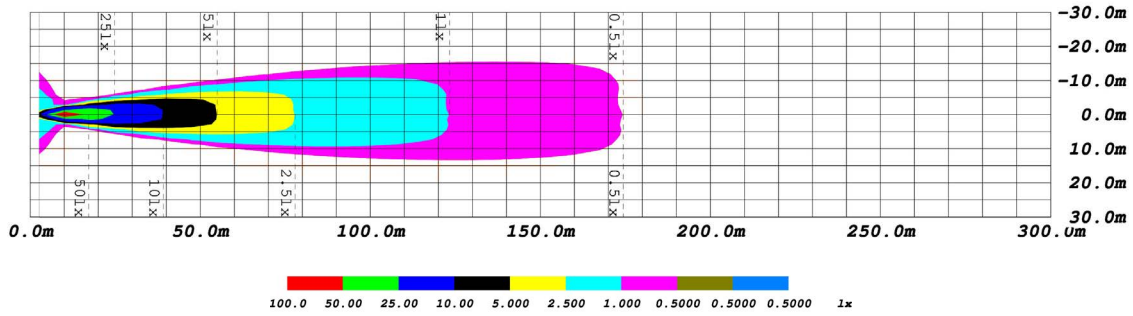
Flood Optic Isocandela



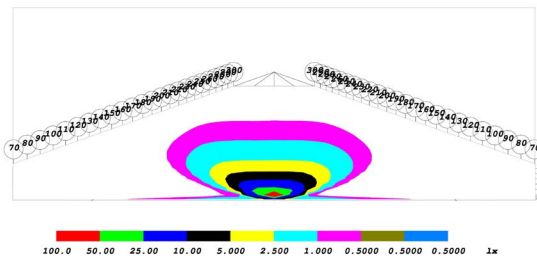
PUBLISHED: 1-10-2022

PHOTOMETRIC SPECIFICATIONS (cont.)

Spot Optic Isolux



Spot Optic Perspective



Spot Optic Isocandela

