

SSC1 Pro White Standard LED Pod



FEATURES

STAGE
SERIES



- Compact single-LED form factor
- High intensity LED chip
- Backlighting available in white, amber, red, and blue
- Durable powdercoated aluminum construction
- Integrated Deutsch-style connector
- Designed, torture tested and assembled in USA

GENERAL SPECIFICATIONS

Optic	Peak Beam Intensity (Candela)	Illuminance (lux @10m)	Measured Output (Lumens)	Raw Output (Lumens)	Output Color
Wide	5,400 cd	54 lux	2,300 lm	2,375 lm	6000K White
Flood	925 cd	9 lux	2,300 lm	2,375 lm	6000K White
Spot	23,000 cd	230 lux	2,300 lm	2,375 lm	6000K White

Functions: White Output with White, Amber, Red, or Blue Backlight

Voltage Range: 9-16V

Current Draw (amps @ 12.8V): 1.7A (output), 24mA (backlight)

Wattage: 21.9W (output), 0.3W (backlight)

Connector Type: 4 Pin DT Connector

Driver Type: Integrated Driver

LED Type/Count: Cree XHP50 6000K/1 total, 3014/3 total

Compliance Rating: J575 Durability Test

Intrusion Rating: IP67 Weatherproof

Operating Temperature: -40°C to 85°C

What's Included:

- One (1) or Two (2) SSC1 Standard LED Pods
- One (1) or Two (2) Deutsch-style wire pigtails
- One (1) or Two (2) Mounting brackets and hardware

Dimensions & Weight:

Length: 7.5" **Width:** 4.5" **Height:** 3"

Weight: 0.7 lbs (single), 1.2 lbs (pair)

SKUs: Append "S" to the end of each SKU for single and "P" for pair

DD6454 SSC1 Pro White Wide Standard WBL
DD6455 SSC1 Pro White Wide Standard ABL
DD6456 SSC1 Pro White Wide Standard RBL
DD6457 SSC1 Pro White Wide Standard BBL

DD6459 SSC1 Pro White Flood Standard WBL
DD6460 SSC1 Pro White Flood Standard ABL
DD6461 SSC1 Pro White Flood Standard RBL
DD6462 SSC1 Pro White Flood Standard BBL

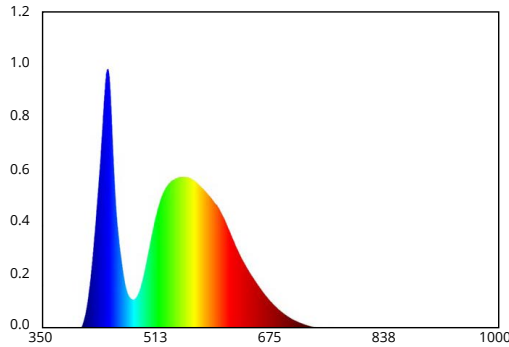
DD6464 SSC1 Pro White Spot Standard WBL
DD6465 SSC1 Pro White Spot Standard ABL
DD6466 SSC1 Pro White Spot Standard RBL
DD6467 SSC1 Pro White Spot Standard BBL

All data and specifications are nominal values and may vary.

PUBLISHED: 1-10-2022

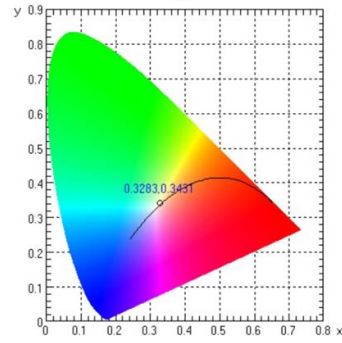
COLORIMETRIC SPECIFICATIONS

WHITE MAIN BEAM



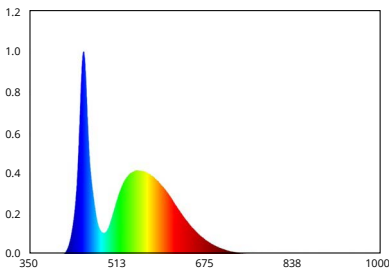
Spectral Distribution

CHROMATICITY



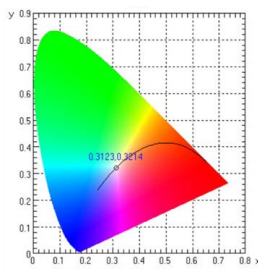
X=0.3283, Y=0.3431

WHITE BACKLIGHT



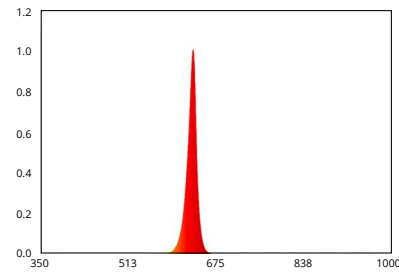
Spectral Distribution

CHROMATICITY



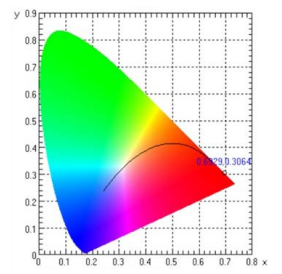
X=0.3123, Y=0.3214

RED BACKLIGHT



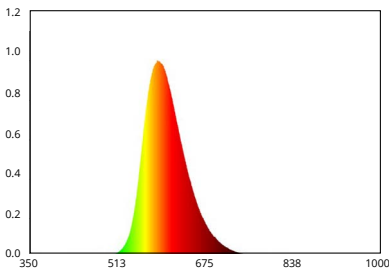
Spectral Distribution

CHROMATICITY



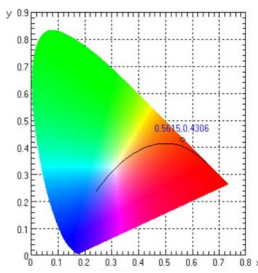
X=0.6929, Y=0.3064

AMBER BACKLIGHT



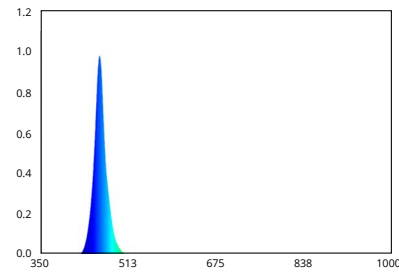
Spectral Distribution

CHROMATICITY



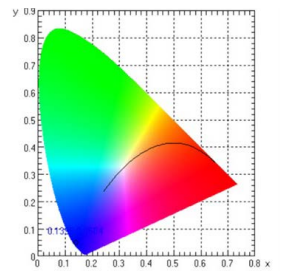
X=0.5615, Y=0.4306

BLUE BACKLIGHT



Spectral Distribution

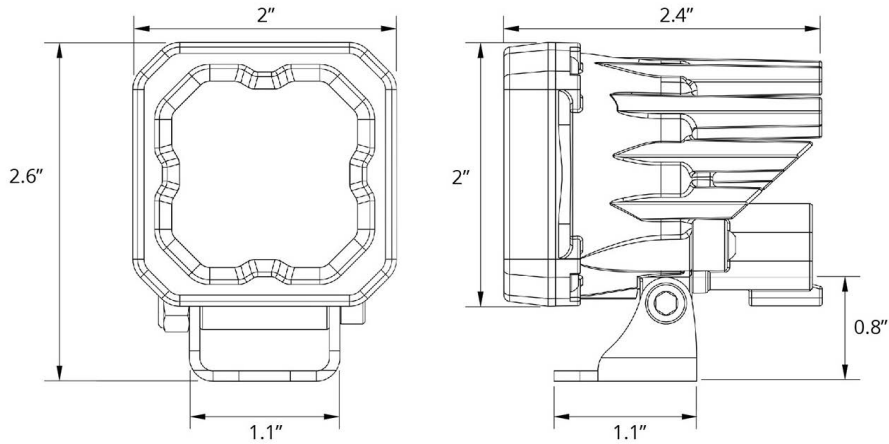
CHROMATICITY



X=0.1395, Y=0.0504

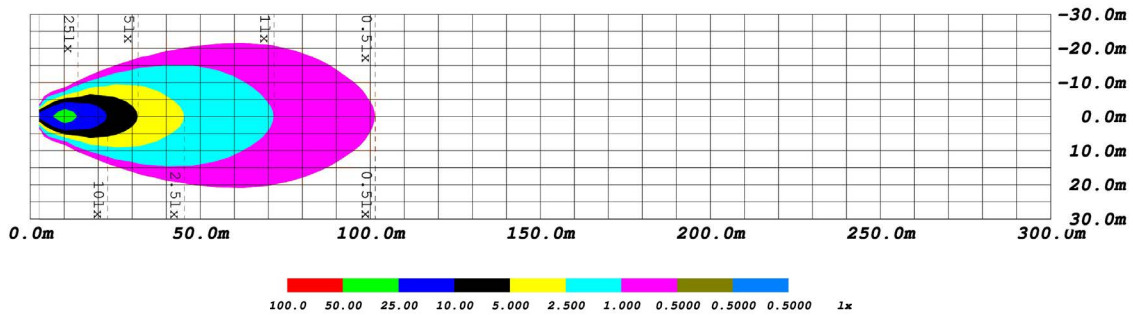
PUBLISHED: 1-10-2022

PRODUCT DIMENSIONS

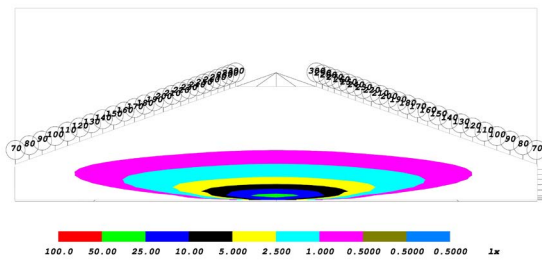


PHOTOMETRIC SPECIFICATIONS

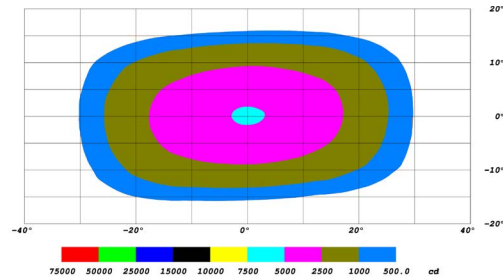
Wide Optic Isolux



Wide Optic Perspective



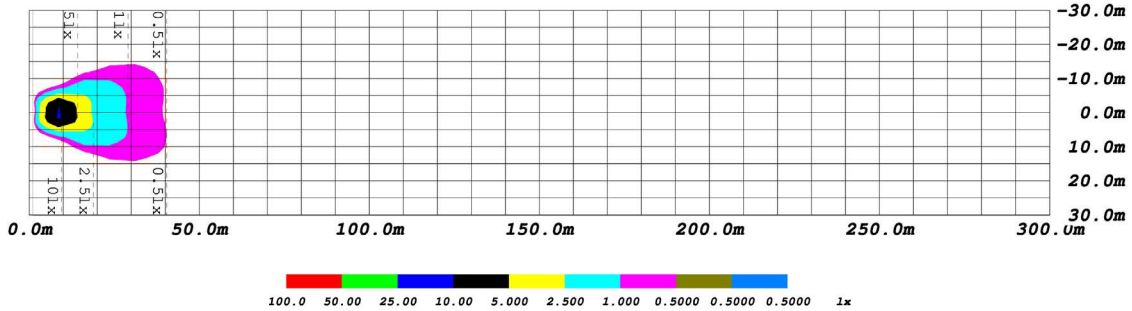
Wide Optic Isocandela



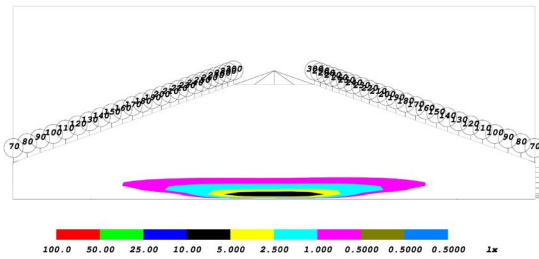
PUBLISHED: 1-10-2022

PHOTOMETRIC SPECIFICATIONS (cont.)

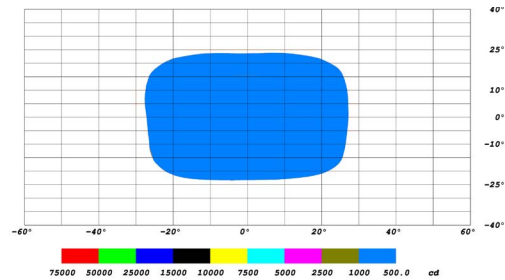
Flood Optic Isolux



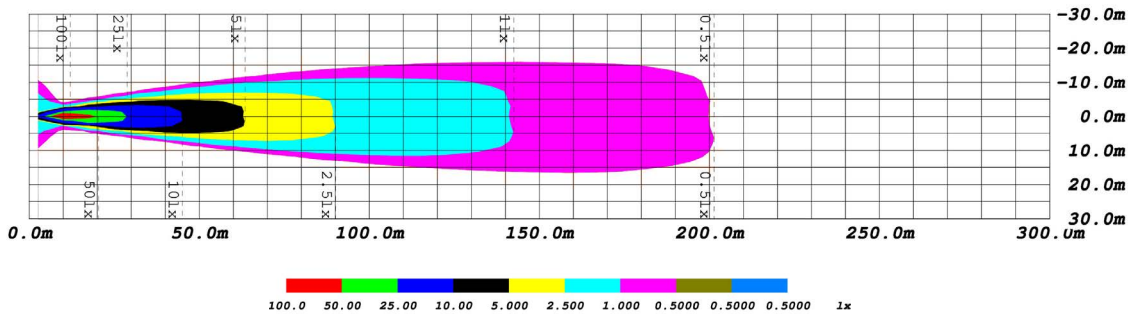
Flood Optic Perspective



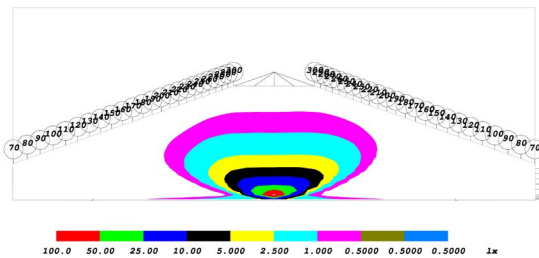
Flood Optic Isocandela



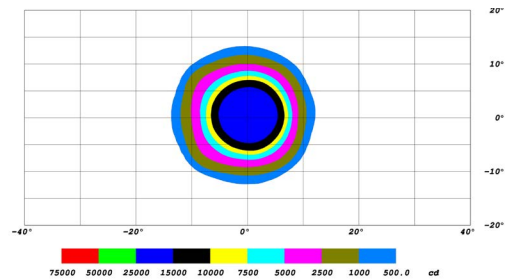
Spot Optic Isolux



Spot Optic Perspective



Spot Optic Isocandela



PUBLISHED: 1-10-2022