

Stage Series 3" Max White Round LED Pod



FEATURES

- Maximum output and performance, in a compact 3" package
- Four automotive-grade Osram Boost HX 20-watt LEDs
- Pin-fin heatsink design, for superior thermal dissipation
- Integrated Deutsch-style connector
- Durable powdercoated aluminum construction
- Designed, torture tested and assembled in USA

GENERAL SPECIFICATIONS

Optic	Peak Beam Intensity (Candela)	Illuminance (lux @10m)	Measured Output (Lumens)	Raw Output (Lumens)	Output Color
Driving	98,000 cd	980 lux	3,500 lm	7,920 lm	6000K White
Fog	18,000 cd	180 lux	3,500 lm	7,920 lm	6000K White

Functions: White Output

Voltage Range: 9-16V

Current Draw (amps @ 12.8V): 3A

Wattage: 38.5W

Connector Type: Deutsch DT Connector

Driver Type: Integrated Driver

LED Type/Count: Osram Boost HX/4 total

Compliance Rating: J575 Durability Test, SAE-F J583

Intrusion Rating: IP69K Waterproof, High Pressure

Operating Temperature: -40°C to 85°C

What's Included:

- One (1) or Two (2) Stage Series 3" LED Pods
- One (1) or Two (2) Deutsch-style wire pigtails
- One (1) or Two (2) Mounting brackets and hardware

Dimensions & Weight:

Length: 14.5" **Width:** 10" **Height:** 5"

Weight: 2.5 lbs (single), 3.5 lbs (pair)

SKUs: Append "S" to the end of each SKU for single and "P" for pair

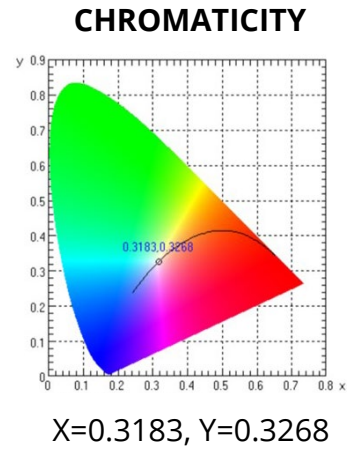
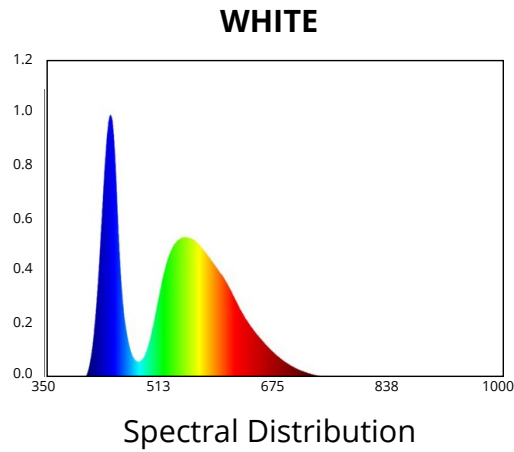
DD6493 Stage Series 3" Max White Driving Round

DD6494 Stage Series 3" Max White Fog Round

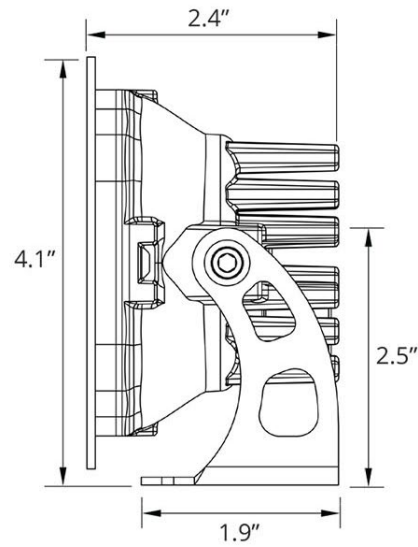
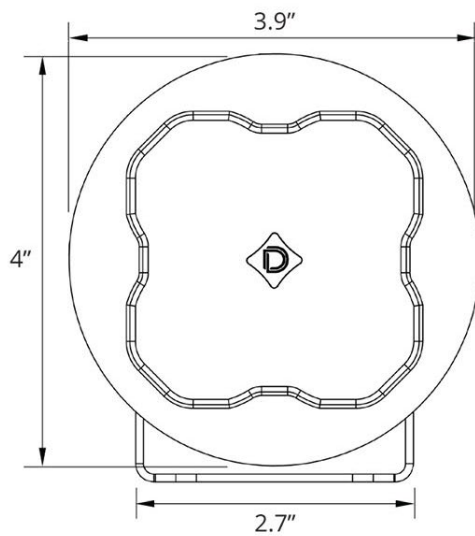
All data and specifications are nominal values and may vary.

PUBLISHED: 2-24-2021

COLORIMETRIC SPECIFICATIONS



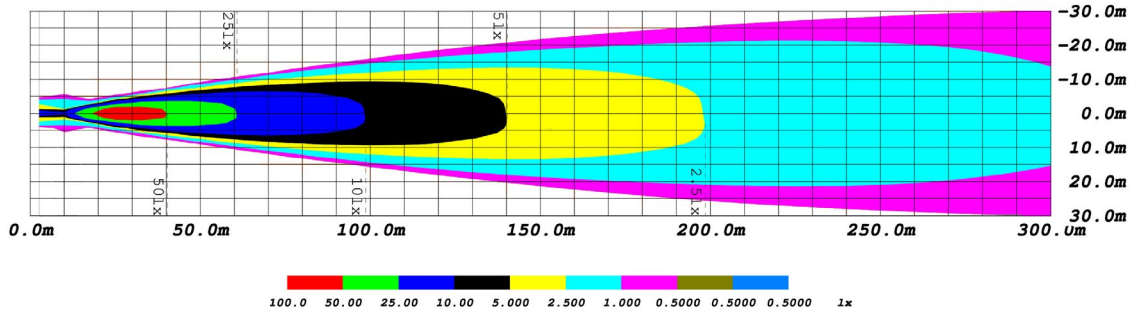
PRODUCT DIMENSIONS



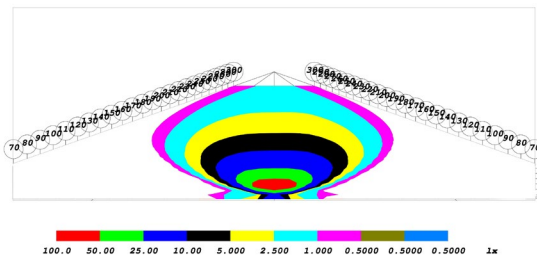
PUBLISHED: 2-24-2021

PHOTOMETRIC SPECIFICATIONS

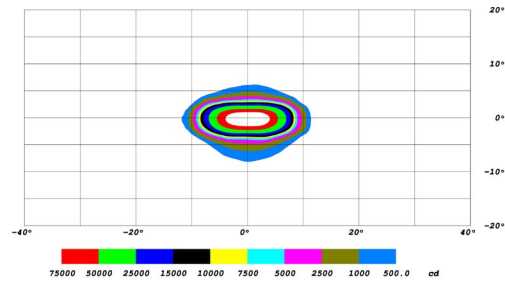
Driving Optic Isolux



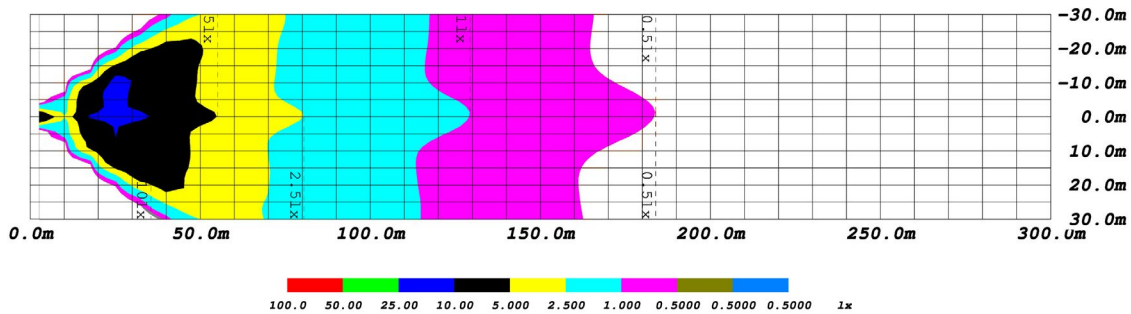
Driving Optic Perspective



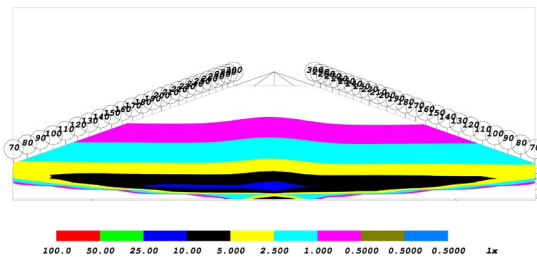
Driving Optic Isocandela



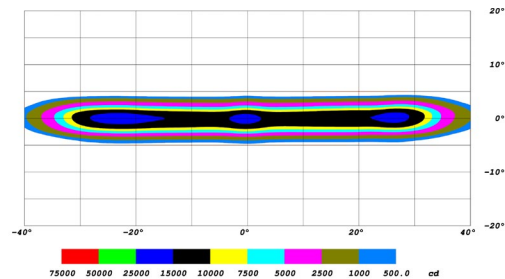
Fog Optic Isolux



Fog Optic Perspective



Fog Optic Isocandela



PUBLISHED: 2-24-2021